



**Classic Color Documentation.**

**Alfa Romeo**



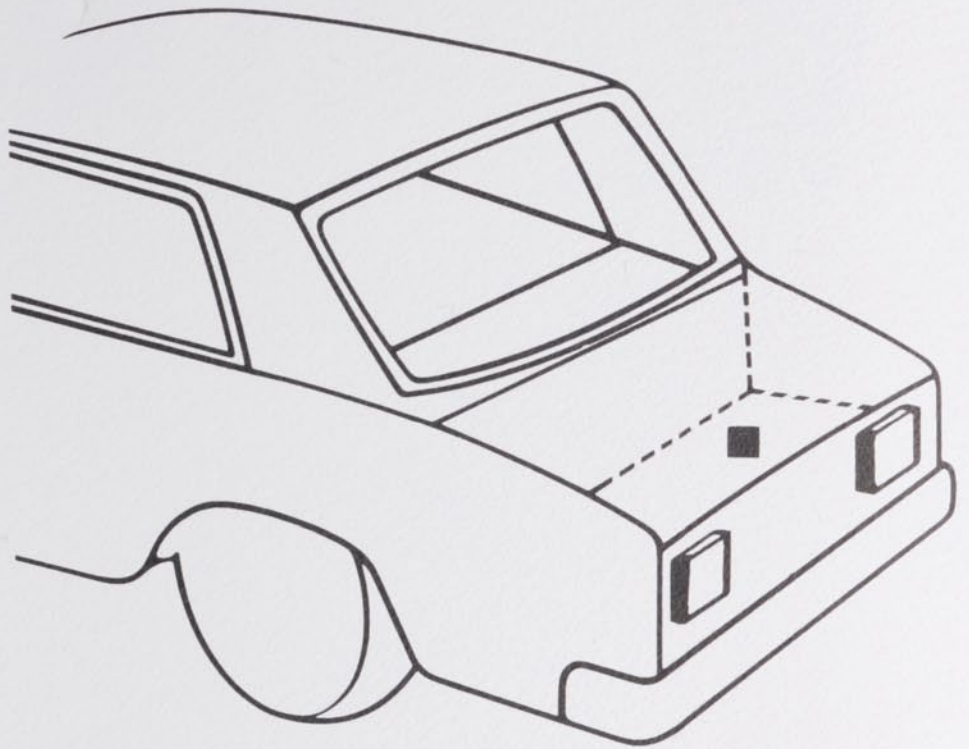
**CLASSIC**  

---

**COLOR PARTNER**

# Alfa Romeo

## Werksfarbtonangabe



### VERNICIATURA ORIGINALE

I RITOCCHI DI VERNICIATURA DEVONO ESSERE ESEGUITI CON SMALTO ACRILICO REFLOW.

verde matese  
A.R.232



**008 bianco pininfarina (1984)**

Nuancen: 008 bianco - 1972 - Blatt 6

**245 petrolio/R (1984)**

**Arna**

Nuancen: /GN - 1983 - Blatt 16

**247 garbadine (1985)**

**364 blu Arveco (1985)**

**369 blu posillipo (1984)**

**372 blu scuro (1985)**

**Pininfarina**

**530 rosso/BR (1985)**

Nuancen: /L - 1973 - Blatt 7

**551 rosso navaio (1984)**

**834 bruno cileto/D (1985)**

Nuancen: /H - 1976 - Blatt 9

+ **852 beige/GR (1985)**

Nuancen: /GE - 1983 - Blatt 16

/R - 1984 - Blatt 18

+ Zweischicht-Metallic-Lackierung

+ Zweischicht-Metallic-Lackierung

+ 022 bianco argento (1985)



+ 248 ocean (1985)



+ 371 azzurro (1985)



+ 543 luci del bosco/H (1985)  
Nuancen: /D - 1982 - Blatt 16



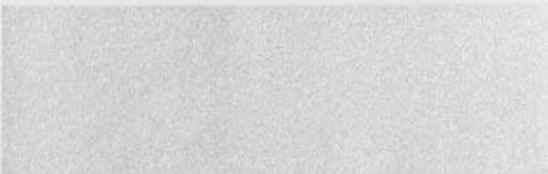
+ 550 occhio di tigre (1984)



+ 552 rosso scuro (1985)



+ 755 grigio nisida/R (1984)  
Nuancen: /GE - 1984 - Blatt 18  
/D - 1981 - Blatt 13  
/H - 1983 - Blatt 17



+ 770 grigio scuro (1985)  
Pininfarina



+ 722 grigio verde (1985)



+ 855 champagne (1985)



+ **242 verde acqua-met./GE**  
**(1984)**  
Nuancen: **242/D AF** - 1983 - Blatt 16  
**242/H** - 1981

+ **246 verde chiaro-met. (1984)**  
(Pininfarina)

+ **370 blu medio-met. (1984)**  
(Pininfarina)

+ **547 rosso amaryllis-met. (1984)**  
(Pininfarina)

+ Zweischicht-Metallic-Lackierung

+ **755 grigio nisida-met. (1984)**

+ **768 grigio neutro-met. (1984)**

+ **843 beige champagne-met.**  
**(1984)**

+ **852 beige-met./R (1984)**  
Nuancen: **/GE** - 1983 - Blatt 16

+ **767 argento-met. (1983)**

**844 beige chiaro (1984)**



+ **907 nero-met./H (1982)**  
Nuancen:907/D - Spider - Blatt 15



+ **540 rame chiaro.met./H(1983)**  
Nuancen:540/D - 1981 - Blatt 6



+ **545 opale-met. (1983)**



+ **546 granata-met. (1983)**



+ **755 grigio nisida-met./H (1983)**  
Nuancen: 755/D - 1981 - Blatt 6  
755 - 1984



+ **761 grigio-met. matt (1983)**  
(Guiletta Lusso)



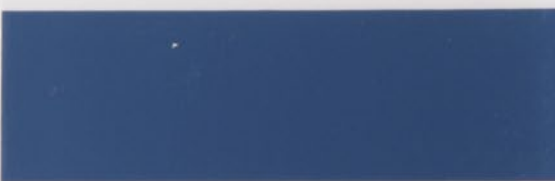
Zweischicht-Metallic-Lackierung

+

+ **765 grigio chiaro-met. (1983)**



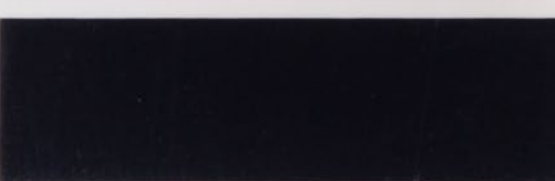
**358 azzurro polizia (1983)**



**853 marrone matt (1983)**  
(Alfasud 33 Tür)



**343 blu olandese/BL (1984)**  
Nuancen: 343/GR - 1968 - Blatt 8



+ 243 acqua-met. (1982)  
(Spider)



908 nero-met. (1982)



+ 909 nero-met. (1982)



+ 367 blu pervinca-met. (1982)



+ 543 luci del bosco-met./D  
(1982)



+ 242 verde acqua-met./D (1983)  
(ab 11/82)



Zweischicht-Metallic-Lackierung  
+

+ 368 blu elettrico-met. (1983)



+ 763 grigio nube-met. (1983)



+ 852 beige-met./GE (1983)  
(Alfasud)



Zweischicht-Metallic-Lackierung

- 851 visone (1983)  
(Alfasud)
- + 231 verde faito-met. (1981)
- 759 grigio nube-met. (1981)
- 235 verde oliva-met./GN (1982)
- 235 verde oliva-met./GR (1976)
- + 365 celeste chiaro-met. (1982)
- + 762 grigio chiaro-met. (1982)
- + 842 bronzo-met./H (1982)  
(Spider)
- + 907 nero-met./D (1982)  
(Spider)
- 213 verde oliva-met./H (1977)





847 marrone testa di moro  
(1978)



129 bianco (1980)



836 bruno (1980)



216 verde pino/H (1976)



232 verde matese/BL (1979)



531 corallo Torre del Greco/  
BR (1980)



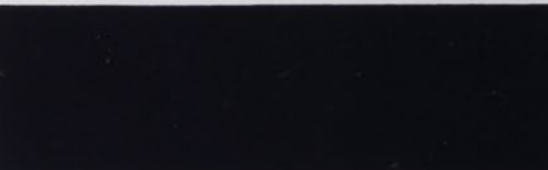
758 grigio finanza (1982)



245 petrolio/GN (1983)



355 blu posillipo/H (1983)



766 grigio juniper (1983)  
(Alfasud)



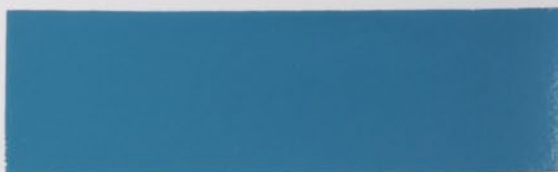
238 verdone (1978)



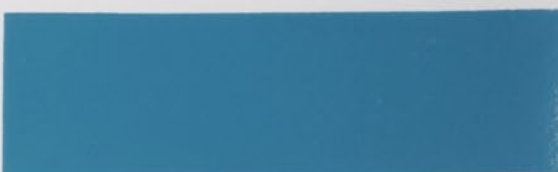
239 verdone (1978)



359 celeste chiaro (1978)



360 celeste chiaro (1978)



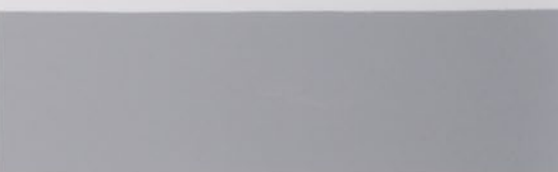
536 rosso veneziano (1978)



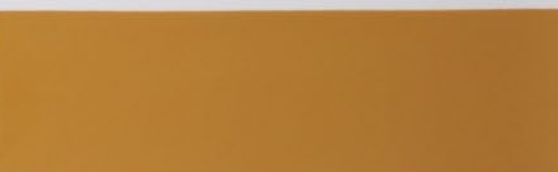
537 rosso veneziano (1978)



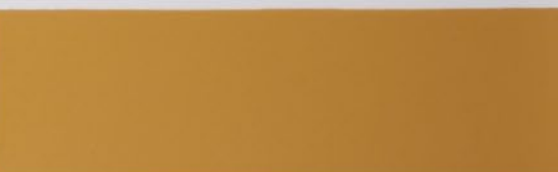
753 grigio indaco (1978)



839 beige cipria (1978)



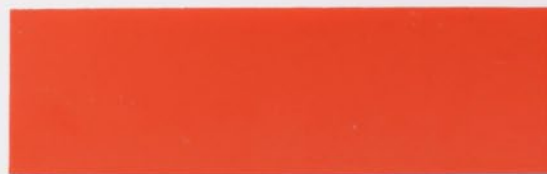
840 beige cipria (1978)



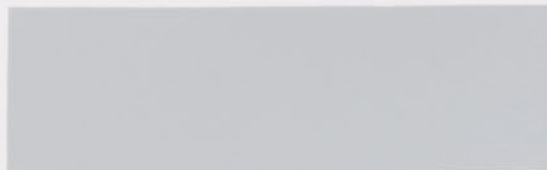
846 marrone testa di moro  
(1978)



531 corallo Torre del Greco/R  
(1975)



745 grigio somma (1975)



121 arancio capua (1976)



225 verde tasmaniz (1976)



834 bruno cilento/H (1976)



356 azzurro capri (1977)



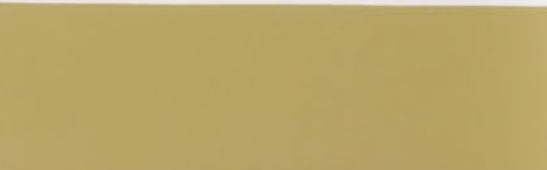
746 grigio antracite (1977)



018 bianco capodimonte  
(1978)



126 giallo pompeii/H (1978)



234 verde pino (1978)





530 rosso/L (1973)



742 grigio vesuvio (1973)



830 beige ponza (1973)



223 verde medio (1974)



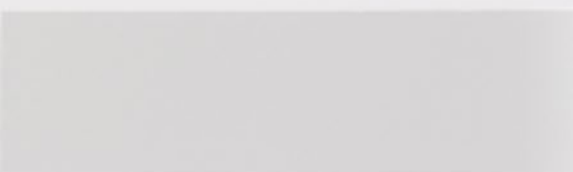
521 rosso cina (1974)



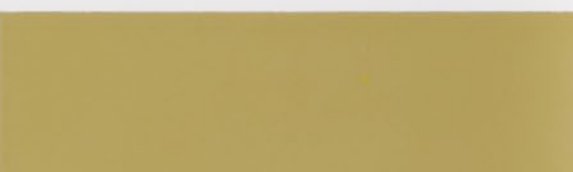
601 arancio (1974)



740 grigio escoli (1974)



126 giallo pompeii/D (1975)



127 giallo pozzuoli (1975)



232 verde matese/GE (1975)



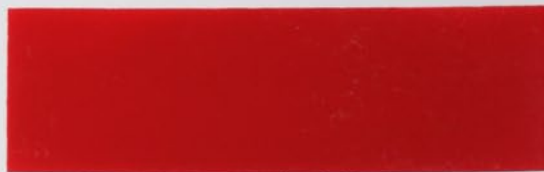
323 blu (1969)



342 blu francia (1969)



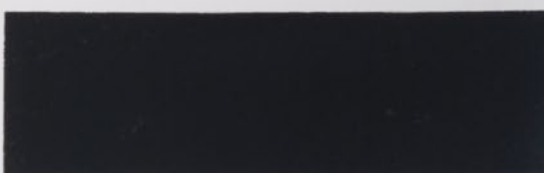
514 rosso farina (1969)



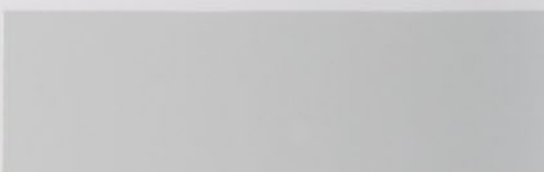
716 grigio grafite (1969)



736 antracite inglese (1969)



014 bianco Zagato (1970)



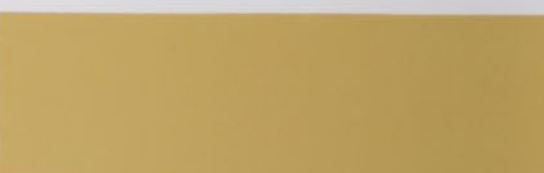
119 giallo prototipo (1970)



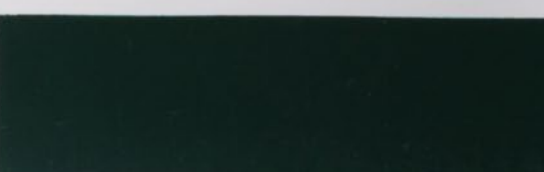
328 blu Zagato (1970)



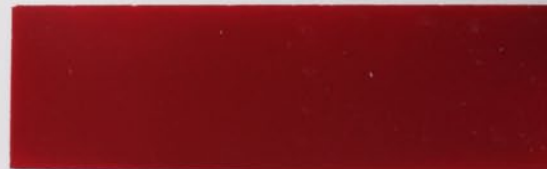
117 giallo oro (1971)



219 verde inglese (1971)



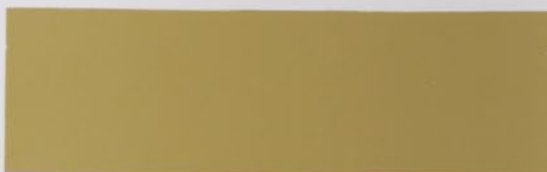
519 rosso Zagato (1971)



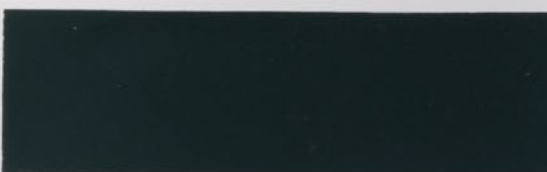
008 bianco (1972)



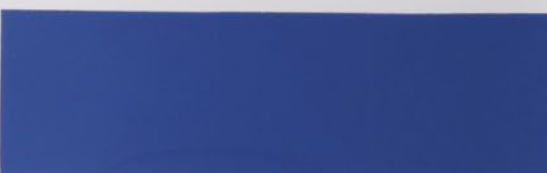
116 giallo piper (1972)



227 verde muschio chiaro  
(1972)



348 azzurro le mans (1972)



525 prugna (1972)



015 bianco capodimonte  
(1973)



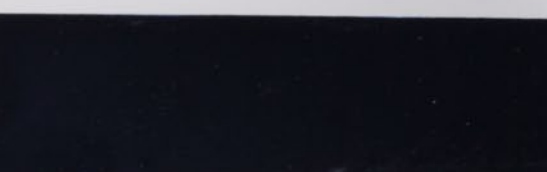
230 verde ischia (1973)



353 blu procida (1973)



355 blu posillipo/D (1973)





509 amaranto (1966)



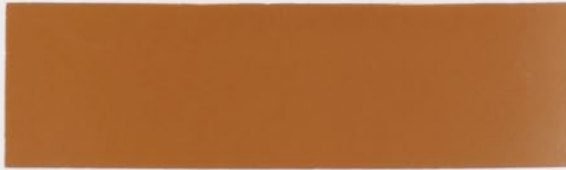
724 grigio beige (1966)



818 bruno fondo (1967)



112 ocra scuro (1968)



113 giallo (1968)



343 blu olandese/GR (1968)



516 amaranto scuro (1968)



735 grigio indaco (1968)



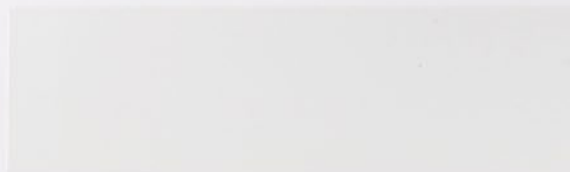
821 beige cava (1968)



103 avorio (1969)  
(Pininfarina)



013 bianco spino (1965)



209 verde muschio (1965)



312 blu medio (1965)



324 blu cobalto (1965)



327 bluette (1965)



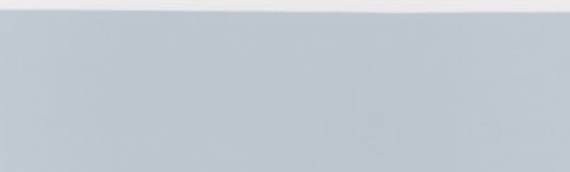
330 azzurro spazio (1965)



501 rosso alfa/D (1965)



701 acqua di fonte (1965)



109 giallo ocra (1966)



216 verde pino/D (1966)



	837 castano-met. (1980)	
	+ 842 bronzo-met./D (1980)	
	+ 538 rosso-met. (1980)	
	+ 754 grigio-met. (1980)	
	+ 848 bronzo valentino-met. (1980)	
	+ 240 verde-met. (1981)	
+ Zweisicht-Metallic-Lackierung	+ 242 verde acqua-met./H (1981)	
	+ 362 azzurro-met. (1981)	
	+ 540 rame chiaro-met./D (1981)	
	+ 755 grigio-met./D (1981)	



832 beige cuma-met. (1975)



518 rubinia-met. (1976)



827 beige chiaro-met. (1976)



357 blu pervinca-met. (1977)



534 rubinia-met. (1977)



835 beige chiaro-met. (1978)



524 marrone-met. (1978)



752 grigio nisida-met. (1978)



751 grigio-met. (1979)



+ 835 beige chiaro-met. (1980)



+ Zweischicht-Metallic-Lackierung

728 grigio medio-met. (1966)



213 verde oliva-met./D (1967)



337 blu chiaro-met. (1967)



727/737 grigio chiaro-met.  
(1967)



118 champagne-met. (1972)



825 marrone-met. (1972)



224 verde-met. (1974)



231 verde fatto-met. (1975)



349 blu pervinca-met. (1975)



743 grigio nisida-met. (1975)



+ Zweischicht-Metallic-Lackierung



Standex GmbH · Postfach · D-42271 Wuppertal · Deutschland