



Classic Color Documentation.

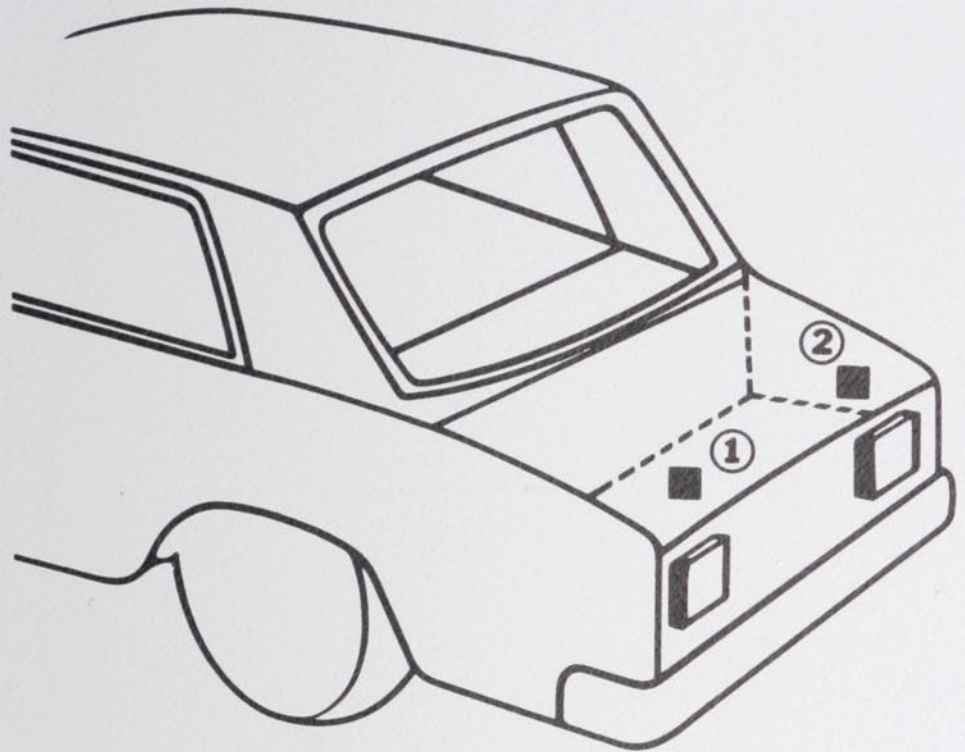
Audi



CLASSIC
COLOR PARTNER

Audi

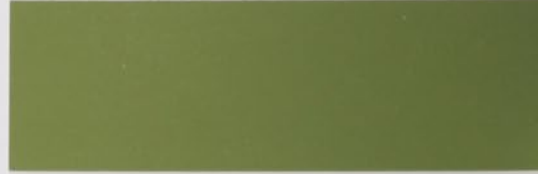
Werksfarbtonangabe



① Typ 50 (Reserveradkasten)

② Typen 80, 100 (Kofferraumdeckel)

L 63 Y manilagrün/GN (1979)



+ Z 5 Y dunkelblau-met. (1982)



+ Z 6 Z dunkelschilf-met. (1982)



+ Z 7 T mittelgrau-met. (1982)



+ Z 7 U grau-met. (1982)



+ Z 8 Y dunkelbraun-met. (1982)



+ Zweischicht-Metallic-Lackierung

+ L 96 Z aeroblau-met. (1972)



+ L 97 Z türkisgrün-met. (1972)



+ L 98 Z achatbraun-met. (1973)



+ L 95 Y achatbraun-met. (1974)



+ L 99 Z türkischell-met. (1974)



+ L 96 Y malachit-met. (1975)



+
Zweischicht-Metallic-Lackierung

+ L 97 Y tizian-met. (1975)



+ L 98 Y atlantik-met. (1975)



+ L 99 Y kolibrigrün-met. (1977)



+ Z 3 Y malagarot-met. (1982)



L 93 Z polizeiweiß (1974)



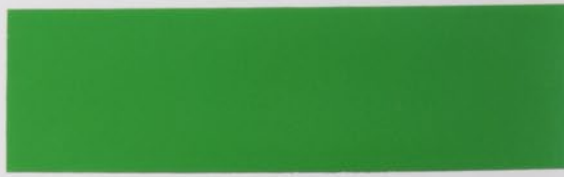
L 11 Y bananagelb (1975)



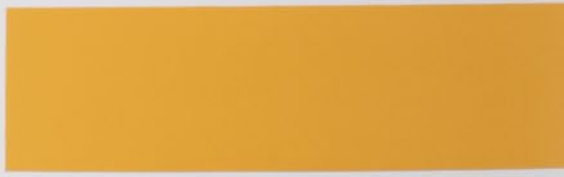
L 54 Y aquablau (1975)



L 62 Y signalgrün (1975)



L 12 Y castellgelb (1976)



L 13 Y inselgrün (1976)



L 33 Y nubisrot (1976)



L 63 Y manilagrün/GE (1976)



L 56 Y andorrablau (1977)



Z 1 M cremebeige (1982)



L 91 Z atlasweiß (1972)



L 32 Z coralle (1973)



L 55 Z delftblau (1973)



L 63 Z spanischgrün (1973)



L 64 Z bermudagrün (1973)



L 80 Z saharabeige (1973)



L 12 Z monzagegelb (1974)



L 66 Z minzgrün (1974)
(Polizei)



L 67 Z polizeigrün (1974)



L 87 Z maroon (1974)



L 51 Z rauchblau (1968)



L 60 Z smaragdgrün (1968)



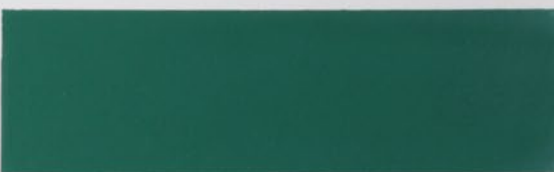
L 10 Z coronagelb (1970)



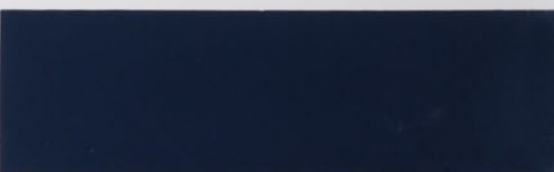
L 21 Z tibetorange/H (1970)



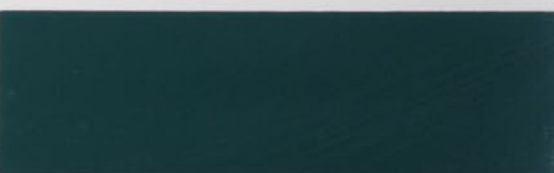
L 61 Z isisgrün (1970)



L 50 Y riverblau (1972)



L 60 Y jagdgrün (1972)



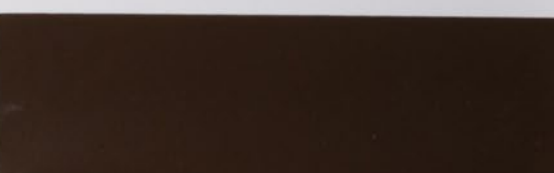
L 62 Z opalgrün (1972)



L 81 Z nevadabeige (1972)



L 86 Z achatbraun (1972)





Standex GmbH · Postfach · D-42271 Wuppertal · Deutschland