



Classic Color Documentation.

BMLC

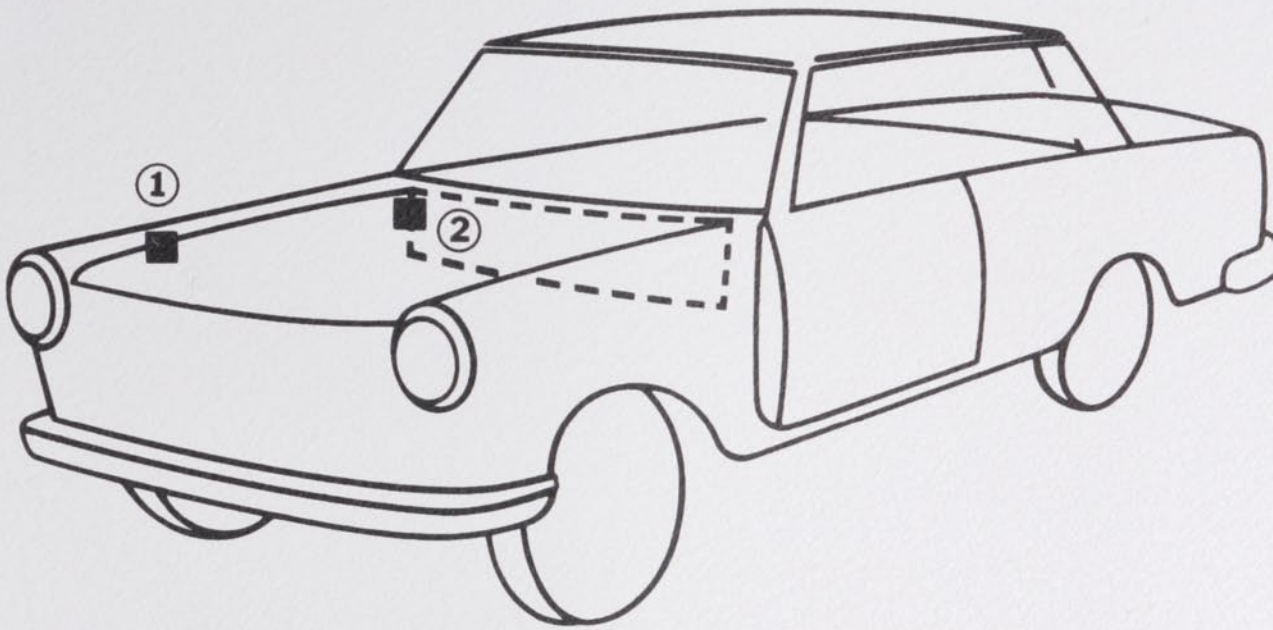


CLASSIC

COLOR PARTNER

BLMC

Werksfarbtonangabe



① Typ Allegro
Maxi
Princess
Morris

② Typ Austin 1300

S T A N D

B L M C

R = Rover, J = Jaguar, T = Triumph

Code = BLVC

AAC maple T
 AAE 205 russet
 AAJ 63 sandglow
 AAN sienna T
 ACA mexico brown R
 ACE tobacco leaf R
 ACD sahara dust R
 ACF sand R
 ACM 214 brazilia
 ADA 275 caramel-met.
 ADR 259 sable J
 ADS 262 carriage brown
 AEA 299 portland beige
 AEB 298 grosvenor brown
 AMD 109 brazil-met.
 AMF 63 sandglow
 AMN 404 peat-met.
 AMP 367 mace
 AMS 398 clove
 ANC 320 cirrus
 BDA 292 chestnut brown-met.
 BDE 267 maroccan bronze
 BMA 29 rheingold-met.
 BMB 112 reynard-met.
 BMC 370 bronze-met.
 BMD 456 bokhara-met.
 CAA 209 carmine
 CAB 204 pimento
 CAD 133 flamenco
 CAE 118 vermilion
 CCA paprika R
 CCB 287 monza red
 CCC 378 masai red
 CCE 211 richelieu
 CCH 205 russet
 CCK 432 bordeaux red-met.
 CCL 440 venetian red
 CDE 287 carnelian
 CDF 258 signal red
 CDG 211 damson red
 CDJ 287 sebring red
 CDM 302 imperial crimson
 CDN 303 garnet-met.
 CEA 310 claret-met.
 CEE cranberry J
 CMA 99 damask red
 CMB 61 flame
 CMD 258 signal red
 CML 118 vermilion
 CMM 383 rose-met.
 CMN 368 ember glow
 CMP 425 oporto-met.
 CMT 399 cinnabar
 CMV 457 monza

Code = BLVC

DDC 277 mink-met.
 DMA 43 aurora-met.
 DMC 401 sombrero-met.
 EAA T topaz
 EDA 279 coral-met.
 EMA 16 blaze
 EMC 133 flamenco
 EMF 478 orange
 FAA T mimosa
 FAB 207 inca yellow
 FCA R almond
 FCB 212 turmeric
 FCD 63 sandglow
 FCE 387 barley yellow
 FDA 252 green sand
 FDB 251 pale primrose
 FDD 266 yellow gold
 FDE 212 cotswold yellow
 FMC 219 golden yellow
 FMD 73 citron
 FME 93 bracken
 FMF 15 bronze yellow
 FMJ 167 chartreuse
 FMN 235 snapdragon yellow
 FMP 442 primula
 GAB 112 reynard-met.
 GCA bahama gold R
 GCC 218 midas gold-met.
 GCF 375 pharaoh gold-met.
 GCG 503 gold
 GDA 280 silver sand-met.
 GDB 306 coronet-met.
 GMA 19 harvest gold
 GMB 138 antique gold
 GMD 422 cashmere-met.
 HAA 254 british racing green
 HAB 208 java
 HAC emerald green T
 HAD 148 tara green-met.
 HAE 169 brooklands green
 HAF 281 poseidon
 HAG 230 triton-met.
 HCA cameron green R
 HCB lincoln green R
 HCD light green R
 HCF 213 avocado
 HCH 230 triton-met.
 HCJ 232 warwick green
 HCL 434 sylvan green-met.
 HDG sage R
 HDH 253 fern grey

R = Rover, J = Jaguar, T = Triumph

Code = BLVC

HDJ 254 british racing green
HDK 278 mistletoe-met.
HDL 453 dark green
HDM 264 juniper green
HDN 281 racing green-met.
HEF 304 evergreen-met.
HEG 314 sage green
HMA 20 limeflower
HMD 22 green mallard
HME 24 wild moss
HMF 94 tundra
HMM 169 brooklands green
HMN 254 british racing green
HMP 144 jade green-met.
HMS 228 applejack
HMT 402 peridot-met.
HMW 423 opaline-met.
HMY 453 dark green

JAA french blue T
JAB delft blue 17 T
JAC ice blue T
JAE 65 tahiti blue
JAF 140 astral blue-met.
JAG 224 pageant blue
JAH 249 denim blue-met.
JAK 223 meteor blue T
JCA scarab blue R
JCB tuscan blue R
JCC marine blue R
JCE 217 caribbean-met.
JCF 236 atlantis blue
JCG 241 persian aqua-met.
JCJ 433 cavalry blue
JCL 249 vogue blue-met.
JDA french blue T
JDG 255 dark blue
JDH 256 lavender blue
JDJ 265 squadron blue
JDM 286 cobalt blue-met.
JDN azure blue J
JEA 291 quartz blue-met.
JEB 301 indigo blue
JEC 307 sapphire-met.
JED 309 kingfisher-met.
JEE 273 biascan blue-met.
JEJ 311 mineral blue
JER 326 dark blue
JMA 60 aqua
JMB 12 midnight blue
JMC 18 teal blue
JMD 42 lagoon-met.
JMF 217 caribbean

Code = BLVC

JMK 111 cosmic-met.
JMP 65 tahiti blue
JMR 140 astral blue-met.
JMW 241 persian aqua-met.
JMY 249 denim blue-met.
JNA 224 pageant blue
JND 470 nautilus blue
JNF 424 moonraker-met.
JNH 397 cornflower
JNJ 471 zircon-met.
JNN 459 eclipse blue

KDA heather J
KDB 274 amethyst-met.
KMA 23 black tulip
KMB 95 aconite

LCA lunar grey R
LDL 315 regent grey
LMA 9 sky mist
LMB 194 cumulus grey
LMF 11 mirage
LMK 248 champagne

MAA 229 oyster-met.
MCA 216 platinum-met.
MCB 396 argent silver-met.
MCD 403 sierra silver-met.
MDB 260 silver grey-met.
MDD 216 silver frost-met.
MDE 396 rhodium silvermet.
MMA 229 oyster-met.
MMB 202 silver grey-met.
MMC 403 silver birch-met.
MMD 377 pewter-met.
MME 421 silver leaf-met.

NAB 206 white
NAD honeysuckle T
NAF 243 leyland white
NCA arctic white R
NCC 417 aran beige
NCF 215 pendelican
NCG 243 porcelain white
NCJ limestone R
NDB 250 old english white
NDC 215 tudor white
NMA 59 glacier white
NMC 243 leyland white
NME 243 ermine white
NMF 449 arum white

R = Rover, J = Jaguar, T = Triumph

Code = BLVC

PAC	90	black
PCF	373	maraschino
PDC	90	black
PDF	308	sable-met.
PMA	90	black
RMR	248 + 449	
RMS	202 + 477	
RNL	243 + 90	
RNM	399 + 90	
RNN	421 + 90	
RNP	423 + 90	
RNR	471 + 90	
SAA	4	bedouin
SCA	441	shetland beige
TDD	257	regency red
UMA	372	turquoise-met.

S T A N D O X

B L M C

BLVC 211	richelieu red	siehe Rover	Blatt 2
BLVC 212	turmeric yellow	siehe Rover	Blatt 2
BLVC 213	avocado green	siehe Rover	Blatt 1
BLVC 214	brazilia brown	siehe Rover	Blatt 2
BLVC 215	pendelican white	siehe Rover	Blatt 2
BLVC 216	platinum-met.	siehe Jaguar	Blatt 3
BLVC 217	caribbean-met.	siehe Rover	Blatt 4
BLVC 218	midas gold-met.	siehe Rover	Blatt 4
BLVC 230	triton green-met.	siehe Rover	Blatt 4
BLVC 232	Awarwick green	siehe Rover	Blatt 4
BLVC 236	atlantis	siehe Rover	Blatt 1
BLVC 241	persian aqua-met.	siehe Jaguar	Blatt 3
BLVC 254	british racing green	siehe Jaguar	Blatt 1
BLVC 262	carriage brown	siehe Jaguar	Blatt 1
BLVC 264	juniper green	siehe Jaguar	Blatt 2
BLVC 265	squadron blue	siehe Jaguar	Blatt 1
BLVC 266	yellow gold	siehe Jaguar	Blatt 1
BLVC 267	maroccan beige	siehe Jaguar	Blatt 2
BLVC 274	amethyst-met.	siehe Jaguar	Blatt 2
BLVC 278	mistletoe-met.	siehe Jaguar	Blatt 2
BLVC 281	poseidon green-met.	siehe Jaguar	Blatt 2
BLVC 286	cobalt blue-met.	siehe Jaguar	Blatt 2
BLVC 287	carnelian red	siehe Jaguar	Blatt 2
BLVC 291	quartz-met.	siehe Jaguar	Blatt 3
BLVC 292	chestnut-met.	siehe Jaguar	Blatt 2
BLVC 307	sapphire blue-met.	siehe Jaguar	Blatt 3
BLVC 308	sable-met.	siehe Jaguar	Blatt 3
BLVC 375	pharaoh gold-met.	siehe Rover	Blatt 3
BLVC 378	masai red	siehe Rover	Blatt 2
BLVC 387	barley yellow	siehe Rover	Blatt 3
BLVC 417	aran beige	siehe Rover	Blatt 3
BLVC 432	bordeaux red-met.	siehe Rover	Blatt 3
BLVC 433	cavalry blue	siehe Rover	Blatt 3
BLVC 434	sylvan green-met.	siehe Rover	Blatt 3
BLVC 440	brick red	siehe Rover	Blatt 3
BLVC 441	shetland beige	siehe Rover	Blatt 3
BLVC 817	sand	siehe Rover	Blatt 4

BLVC 219 golden yellow
(1981)



BLVC 318 dark green (1983)



BLVC 629 nightwatch blue
(1983)



BLVC 632 royal blue (1985)



BLVC 634 ice crem yellow
(1985)



+ BLVC 425 oporto/D (1985)
Nuancen: /H - 1981 - Blatt 13



+ Zweischicht-Metallic-Lackierung

439 gold (1982)



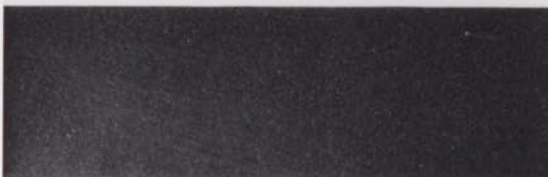
BLVC 455 light blue (1982)



+ BLVC 617 amulet (1985)



+ BLVC 631 nimbus grey (1985)



BLVC 457 monza/BL (1985)
CMV
Nuancen: /GE - 1981- Blatt 13



BLVC 641 targa red (1985)
CNE



BLVC 655 woodruff white (1985)



BLVC 705 british racing green (1985)



BLVC 706 windsor blue (1986)
JEV



BLVC 249 denim blue/BL (1984)
JMY
Nuancen: /GR - 1978 - Blatt 8

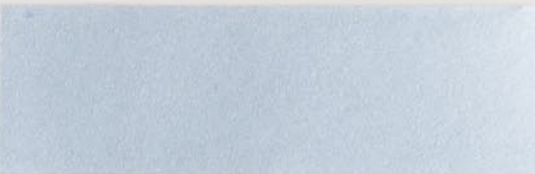


+ Zweischicht-Metallic-Lackierung

+ **BLVC 456 bokhara/GE (1983)**
BMD
Nuancen: /R - 1981 - Blatt 13



+ **BLVC 639 windjammer blue (1985)**



+ **BLVC 704 curlew brown (1985)**



+ **BLVC 708 steel (1986)**
LEC



BLVC 248 champagne/GN

(1983)

LMK

Nuancen:/R - 1979 - Blatt 9



BLVC 317 cumulus white

(1983)

NDE



BLVC 320 cirrus grey (1983)

ANC



BLVC 324 carlton grey (1983)

LDC



BLVC 325 dark green (1983)

HEL



BLVC 326 dark blue (1983)

JER Jaguar



BLVC 329 burgundy (1983)

CEL



BLVC 519 balmoral green

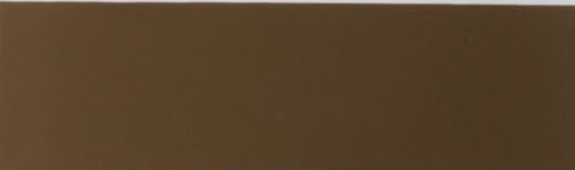
(1983)

Landrover



BLVC 520 arizona tan (1983)

Landrover



BLVC 399 cinnabar/R (1985)

CMT

Nuancen: /GE - 1981 - Blatt 12



+ Zweischicht-Metallic-Lackierung

- + BLVC 423 opaline-met./GE
(1982)
HMW
- + BLVC 423 opaline-met./H
(1983)
HMW
- + BLVC 472 gold-met. (1982)
- + BLVC 473 green-met. (1982)
- + BLVC 474 blue-met. (1982)
- + BLVC 490 light blue-met.
(1982)
- + BLVC 491 light green-met.
(1982)
- + BLVC 421 silver leaf-met./D
(1983)
MME
- BLVC 112 reynard-met. (1975)
BMB
- BLVC 148 tara green-met.
(1977)

+ Zweischicht-Metallic-Lackierung



+ Zweischicht-Metallic-Lackierung

- BLVC 404 peat-met. (1980)
AMN

- BLVC 260 silver-grey-met.
(1981)
MDB

- BLVC 294 april green-met.
(1981)
HEA

- + BLVC 421 silver leaf-met./H
(1981)
MME

- + BLVC 422 cashmere-met./GR
(1981)
GMD

- + BLVC 423 opaline-met./GR
(1981)
HMW

- + BLVC 424 moonraker-met./BL
(1981)
JNF

- + BLVC 425 oporto-met./H
(1981)
CMP

- + BLVC 456 bokhara-met./R
(1981)
BMD

- + BLVC 471 zircon-met./BL
(1981)
JNJ



BLVC 277 mink-met. (1980)
DDC



BLVC 279 coral-met. (1980)
EDA



BLVC 370 bronze-met. (1980)
BMC



BLVC 372 turquoise-met.
(1980)
UMA



BLVC 377 pewter-met. (1980)
MMD



BLVC 401 sombrero-met./R
(1980)
DMC



BLVC 396 argent silver-met./H
(1980)
MCB



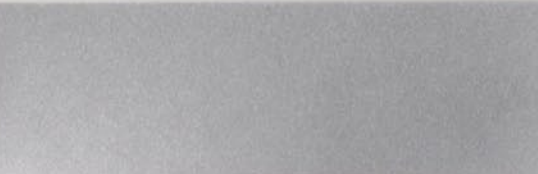
BLVC 402 peridot-met. (1980)
HMT



BLVC 403 silver birch-met.
(1980)
MMC



BLVC 202 silver-met./H (1980)
MMB



BLVC 29 rheingold-met. (1973)
BMA



BLVC 42 lagoon-met. (1973)
JMD



BLVC 109 brazil-met./D (1973)
AMD



BLVC 111 cosmic blue-met.
(1973)
JMK



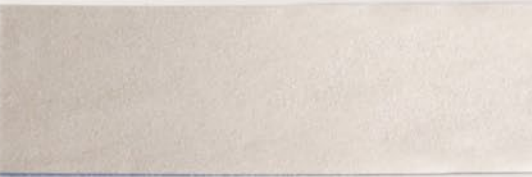
BLVC 140 astral blue-met.
(1976)
JMR



BLVC 144 jade green-met./GN
(1976)
HMP



BLVC 229 oyster-met. (1977)
MAA



BLVC 383 rose-met. (1979)
CMM



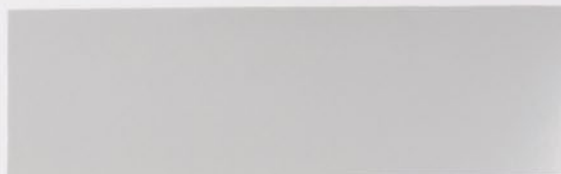
BLVC 273 biascan blue-met.
(1980)
JEE



BLVC 275 caramel-met. (1980)
ADA



BLVC 495 light grey (1982)
LDD



BLVC 496 light yellow (1982)



BLVC 497 maroon (1982)



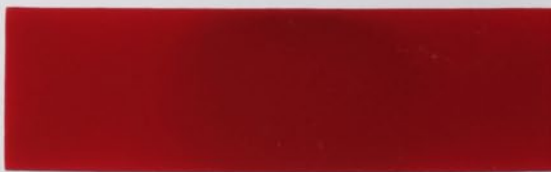
BLVC 442 primula (1981)
FMP



BLVC 449 arum white (1981)
NMF



BLVC 457 monza/GE (1981)
CMV



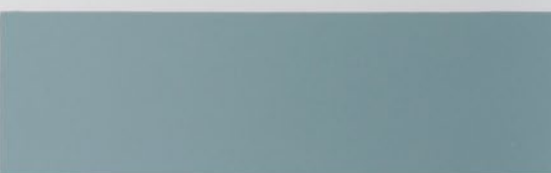
BLVC 243 leyland white (1977)
NMC / NME



BLVC 397 cornflower (1982)
JNH



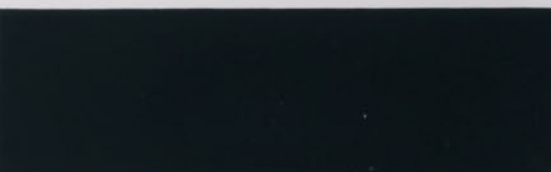
BLVC 450 blue grey (1982)



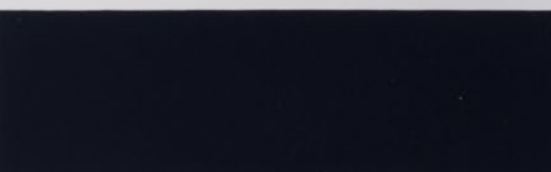
BLVC 452 beige (1982)
AMY



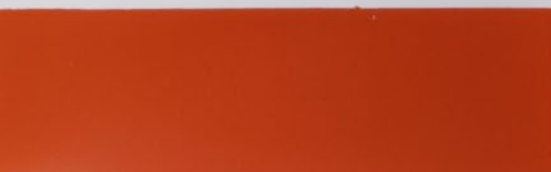
BLVC 453 dark green (1982)
HMY



BLVC 459 eclipse blue (1982)
JNN



BLVC 478 orange (1982)
EMF



BLVC 367 mace (1980)
AMP



BLVC 368 ember glow (1980)
CMN



BLVC 470 nautilus (1980)
JND



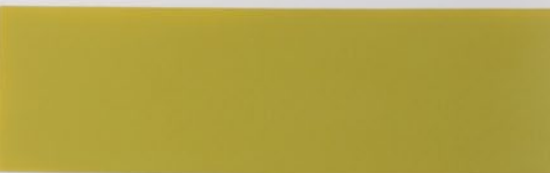
BLVC 298 grosvenor brown (1980)
AEB



BLVC 299 portland beige (1980)
AEA



BLVC 300 mulsanne yellow (1980)



BLVC 301 indigo blue (1980)
JEB



BLVC 302 crimson (1980)
CDM



BLVC 398 clove (1981)
AMS



BLVC 399 cinnabar red/GE (1981)
CMT



BLVC 133 flamenco red (1976)



BLVC 65 tahiti blue (1976)



BLVC 169 brooklands green
(1976)
HMM



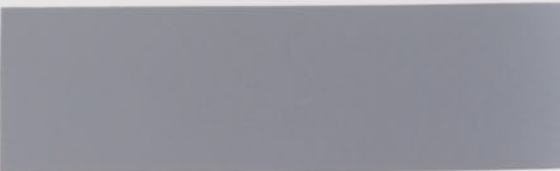
BLVC 167 chartreuse (1976)
FMJ



BLVC 138 antique gold (1976)
GMB



BLVC 194 cumulus grey (1976)
LMB



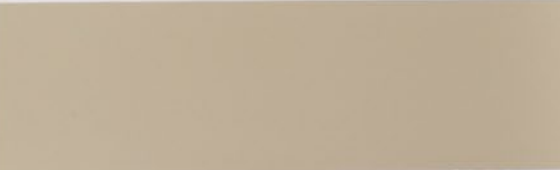
BLVC 228 applejack (1979)
HMS



BLVC 235 snapdragon (1979)
FMN



BLVC 248 champagne/R
(1979)



BLVC 280 silver sand (1980)



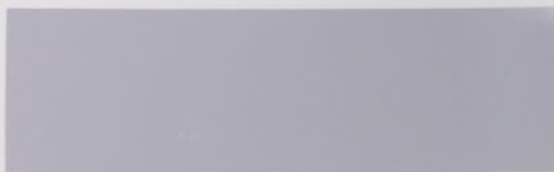
BLVC 23 black tulip (1972)
KMA



BLVC 24 wild moss (1972)
HME



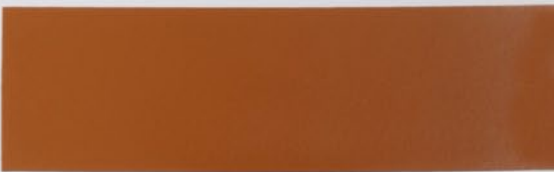
BLVC 11 mirage (1973)
LMF



BLVC 73 citron (1973)
FMD



BLVC 93 bracken (1973)
FME



BLVC 94 tundra (1973)
HMF



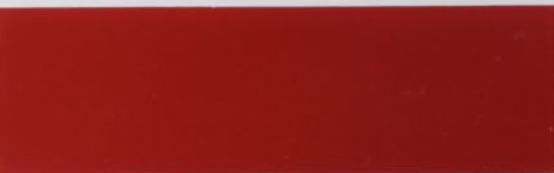
BLVC 95 aconite (1973)
KMB



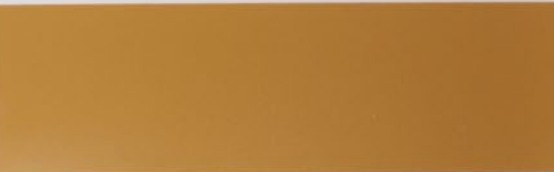
BLVC 65 tahiti blue (1975)
JMP



BLVC 133 flamenco (1975)
EMC



BLVC 63 sand glow (1976)
AMF



BLVC 20 limeflower (1971)
HMA



BLVC 25 racing green (1971)



GN 13 spuce green (1972)



GN 17 porcelain green (1972)



BLVC 99/RD 5 damask red
(1972)
CMA



YL 12 pale primrose (1972)



YL 61 mustard yellow (1972)



BLVC 9 sky mist (1972)
LMA



BLVC 19 harvest gold (1972)
GMA



BLVC 22 green mallard (1972)
HMD



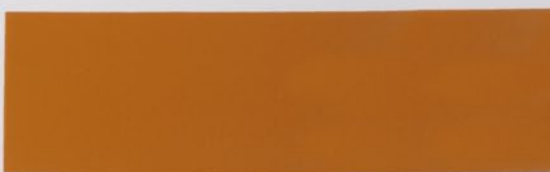
BLVC 3 blackberry (1969)



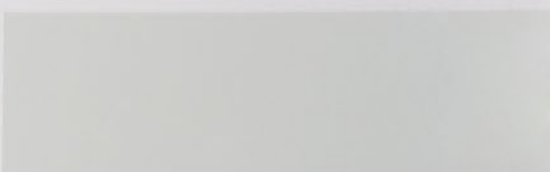
BLVC 7 antelope (1969)



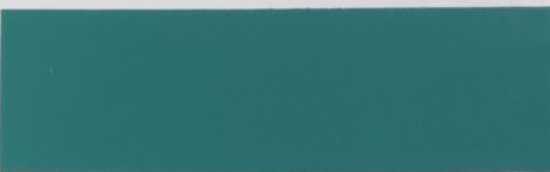
BLVC 15 bronze yellow (1969)
FMF



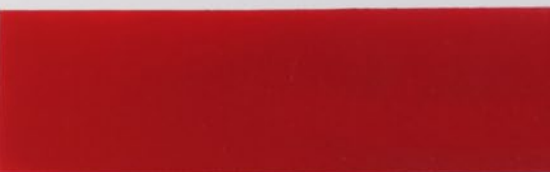
BLVC 59 glacier white (1969)
NMA



BLVC 60 aqua (1969)
JMA



BLVC 61 flame red (1969)
CMB



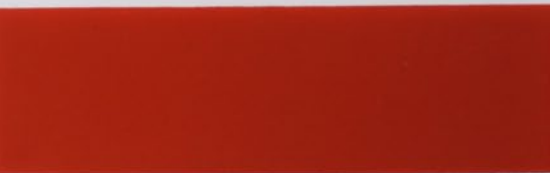
BLVC 4 bedouin (1971)
SAA



BLVC 12 midnight blue (1971)
JMB



BLVC 16 blaze/H (1971)
EMA

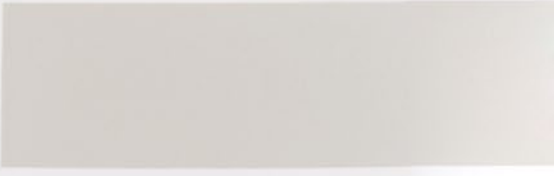


BLVC 18 teal blue (1971)
JMC



STANDOX

- GR 29 cumulus grey (1961)
- WT 4 snowberry white (1961)
- GN 25 british racing green (1962)
- BU 42 honolulu blue (1963)
- GR 31 arabian grey (1963)
- GR 4 tweed grey (1964)
- RD 9 tartan red (1964)
- RD 23 maroon (1964)
- RD 26 fawn brown (1967)
- GN 18 connaught green (1969)



BU 8 island blue (1957)



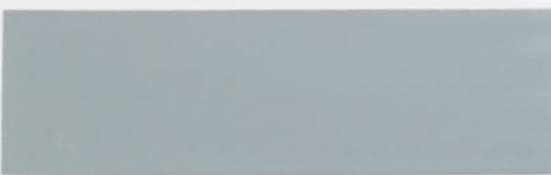
WT 3 old english white (1957)



BG 4 whitehall beige (1958)



BU 15 smoke grey (1958)



GR 18 carlton grey (1958)



GR 26 dove grey (1959)



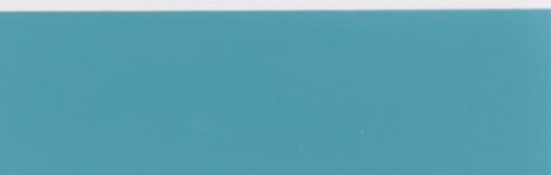
GN 33 willow green (1960)



RD 9 tartan red (1960)



BU 35 surf blue (1961)



GN 37 almond green (1961)





Standex GmbH · Postfach · D-42271 Wuppertal · Deutschland